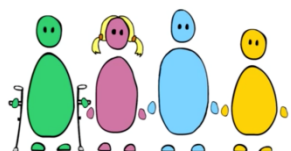




The Local Offer – Support near you



You can find out what support there is near you, by looking at the Local Offer. This is a web page or written information, such as a leaflet. It is written by Bristol City Council, which is sometimes called ‘the council’.



The Local Offer is for:

- children and young people with disabilities
- children and young people with special educational needs. If you need extra help to learn things, then you might have special educational needs
- families of those children and young people.



The Local Offer must tell you about the support you can get near you.

The Local Offer must tell you about:

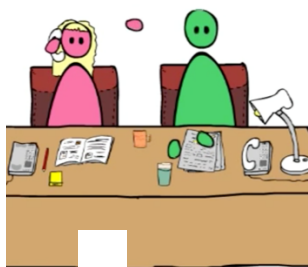
- schools, colleges or training
- special health support
- hobbies or fun activities
- support for becoming an adult
- transport.



Local Offer is on the Bristol City Council’s Findability website. If you cannot get on the website then the council should give you written information, such as a leaflet. The Bristol Findability website is [here](#).



Click [here](#) to see a short video which says what a Local Offer should do. This video is on the Council For Disabled Children's You Tube channel. The channel has other videos you might find interesting.



Supportive Parents can help you to find out about your Local Offer.

Phone: 0117 989 7725

Email: support@supportiveparents.org.uk

Web: www.supportiveparents.org.uk

www.supportiveparents.org.uk

Disclaimer: Supportive Parents has made all reasonable efforts to ensure that the information contained in this leaflet is accurate and up to date at the time of publication. It does not constitute legal advice and Supportive Parents cannot accept any responsibility for any loss or damage suffered as a consequence of any reliance placed upon it.